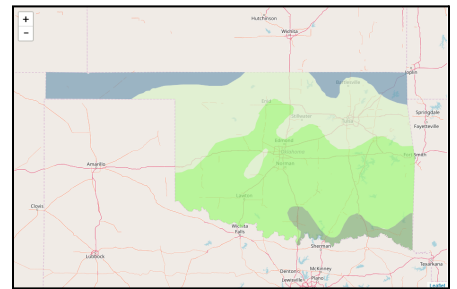




The Best Plants for Shade in Oklahoma

Our **Oklahoma City, Norman, Moore, Purcell** and **surrounding service areas** are in zone 7a. Check out the interactive map at:

<https://www.jnatelandscape.com/OklahomaHardinessZoneMap>



Hosta

Green leaves, low growing plant

Attractive foliage spring through fall

Good companions for astilbe, bleeding heart, ferns, caladiums and begonias

Can be like candy to deer

<https://www.emeraldedgesok.com/Hostas>

Zones 3 to 9



Coral Bells

Easy perennials to grow in a wide range of conditions

Colorful foliage varieties and flowers

<https://www.emeraldedgesok.com/CoralBells>

Zones 4-9



Emerald
Edges



Bleeding heart

Best in partial shade, heart-shaped pink flowers, sensitive to heat

Toxic to humans and animals

<https://www.emeraldedgesok.com/BleedingHeart>

Zones 3-9



Astilbe

Great for shady, moist conditions, low maintenance

Colorful flower plumes for weeks, fast growing

6-24 inches tall with fern-like foliage

<https://www.emeraldedgesok.com/Astilbe>

Zones 4-9



Emerald
Edges



Coleus

Can be planted in pots outside and taken indoors to protect from frost

Vibrant foliage, shade loving

Prone to insects

<https://www.emeraldedgesok.com/Coleus>

Zone 11



Solomon's Seal

Small flowers followed by berries

Blanket of foliage that turns yellow in fall

Most varieties 1-2 feet tall

<https://www.emeraldedgesok.com/SolomonsSeal>

Zones 3-9



Phlox

Varieties range from ground cover blooming in early spring to tall plants that bloom in summer

Many varieties and colors

Creeping or moss phlox work well as ground cover

Low maintenance with a pleasant fragrance

(Tall varieties tend to prefer sun)

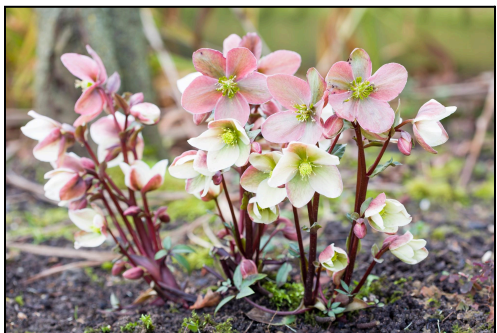
<https://www.emeraldedgesok.com/Phlox>

Zones 4-8



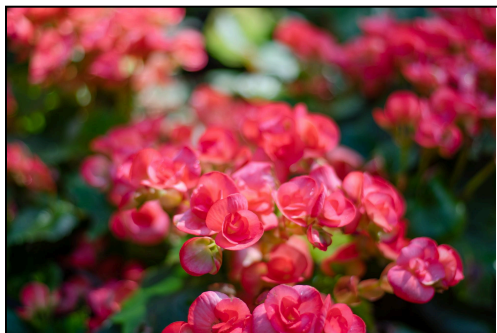
Impatiens

Bold flowers, inexpensive
Attractive to hummingbirds
Can be grown in pots
<https://www.emeraldedgesok.com/Impatiens>
Annual varieties in zones 2-9 (Impatiens balsamina)
Zones 2-11



Helioborus aka Lenten roses

Bloom in late winter and early spring
Dark green leaves keep their color all year (evergreen)
18x18x18"
<https://www.emeraldedgesok.com/Helioborus>
Zones 6-9



Begonias

Colorful flowers for shady areas
1 foot tall or less, flowers up to 4 inches wide
<https://www.emeraldedgesok.com/Begonias>
Zones 9-10
Zones 2-8 (grown as annuals or in pots and taken inside to avoid frost)



Hydrangea

Colorful, large globes of flowers spring through summer
Up to 15 feet tall, grows quickly
<https://www.emeraldedgesok.com/Hydrangea>
Zones 3-7

**Caladium**

Excellent for shady gardens, but can be sun tolerant depending on variety

Large, colorful leaves

<https://www.emeraldedgesok.com/Caladiums>

Zones 9-11

Zones 3-8 (grown as annuals to be replaced in late spring)